

Ryan White GY32 Kickoff Provider Meeting

Princess L. Johnson
Public Health Analyst, Care and Treatment Division

PROGRAM EXPECTATIONS

REPORTING



PROGRAM EXPECTATIONS

GRANT REPORTING REQUIREMENTS

- CAREWare data entry
 - Daily or monthly uploads
- Invoice submission in EGMS– **Due by 10th business day**
 - Monthly CAREWare Financial Report
 - Monthly Narrative Report
- Program Narrative submission in EGMS– **Due by 10th business day**
 - Monthly Narrative Report
 - Monthly CAREWare Financial Report
- Payment Authorization Notice (PAN) submission in DC Vendor Portal- **Due within 3 business days of receipt**
- Closeout
 - Summary program narratives due 30 days after close of grant
- ShareFile
 - Submission of support docs with Protected Health Information (PHI)

PROGRAM EXPECTATIONS

GRANT PROGRAM MONITORING

- CAREWare data review
- Monthly narrative review
- Invoice review
- Monthly check-ins
- Provider Report Card
- Annual Site Visit
- Payment Request Review *(including invoice and support docs)*
- Technical Assistance *(visits, calls, EGMS, capacity building, etc.)*
- Remediation Plans *(to remedy problems –fiscal and/or programmatic)*
- Corrective Action Plans *(problems not remedied with Remediation Plan)*

PROGRAM EXPECTATIONS

- Case Management Operation Committee (CMOC) Quarterly Trainings
 - Take place the 3rd Thursday of each month
 - Attendance is required for all Ryan White medical and non-medical case managers

PROGRAM EXPECTATIONS

MINORITY AIDS INITIATIVE (MAI)-YOUTH REACH

- Outpatient Ambulatory Health Services (on-site or approved partnership)
- Medical Case Management (on-site)
- Early Intervention Services (on-site)
- Mental Health (on-site)
- Substance Abuse (on-site or approved partnership)
- Psychosocial Support (on-site)



PROGRAM EXPECTATIONS

Early Intervention Services

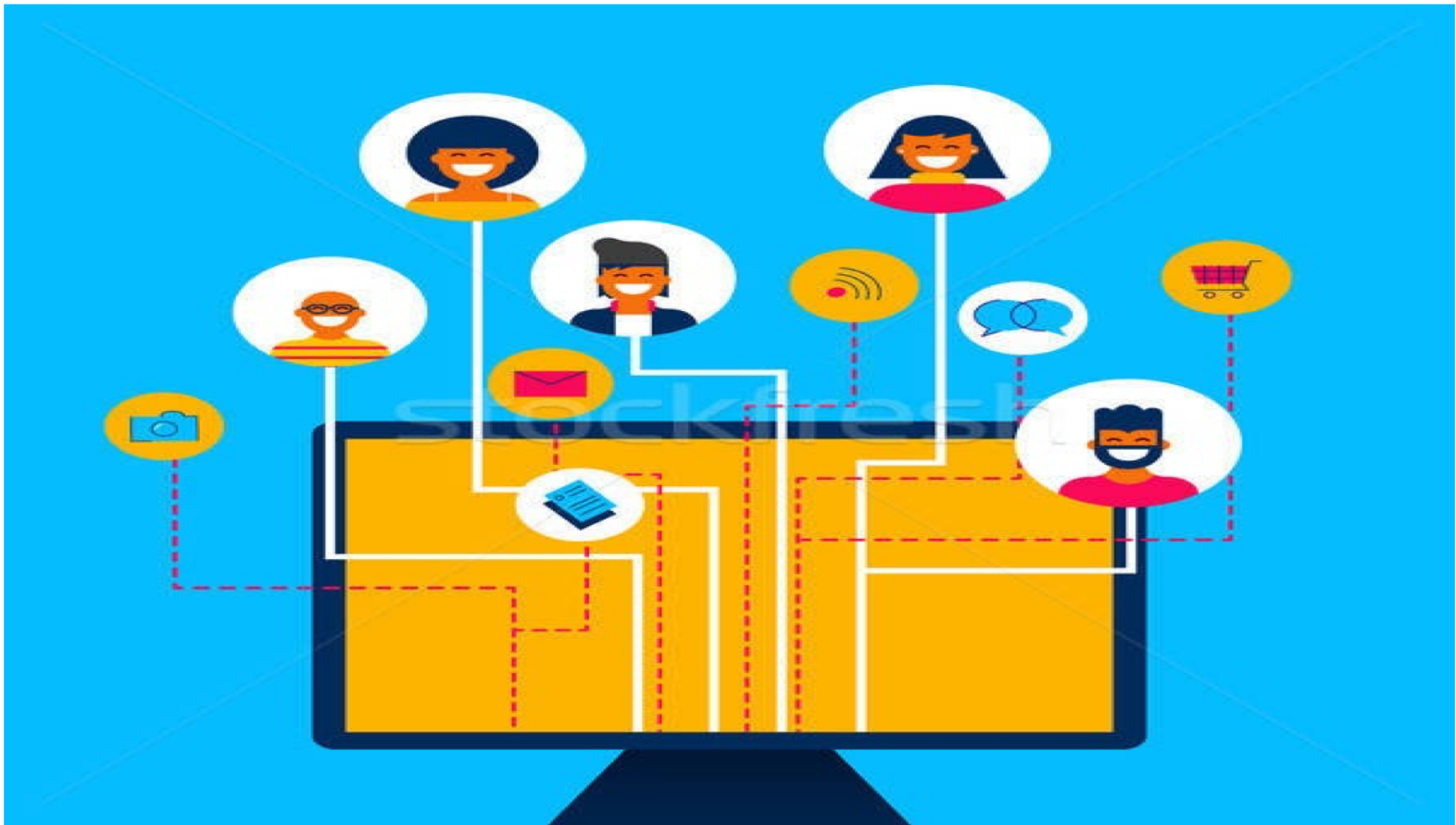
Hi-V (high-five) Pillars

- Find' em"
- Teach' em"
- Test' em"
- Link' em"
- Keep' em"



LinkU

DOH'S ONLINE RESOURCE AND REFERRAL GUIDE



QUESTIONS?

Princess L. Johnson

Public Health Analyst, Care and Treatment Division

princess.johnson@dc.gov

DC | HEALTH

GOVERNMENT OF THE DISTRICT OF COLUMBIA

899 North Capitol Street NE, 5th Fl, Washington, DC 20002

 dchealth.dc.gov



@_DCHealth



dchealth



DC Health

For more information on the District's COVID-19 response, visit coronavirus.dc.gov