

# **Intervention Services Program: Innovative Approaches to Ending the HIV Epidemic**

---

**Ashley Coleman, LICSW, Program Manager**  
**March 29, 2023**

# Intervention Services Program (ISP) Purpose

HAHSTA will employ direct service providers using the community health worker and clinical care coordinator models of care to provide effective patient care services using best practices and innovative program models to improve health outcomes and increase HIV viral suppression.

# PROGRAM OVERVIEW

---

## HIRE:

Hire Community Health Workers (CHW) as DC Health employees

---

## DEPLOY:

Deploy CHW to community provider sites to provide HIV intervention services. Staff is monitored by HAHSTA, in conjunction with the on-site agency liaison.

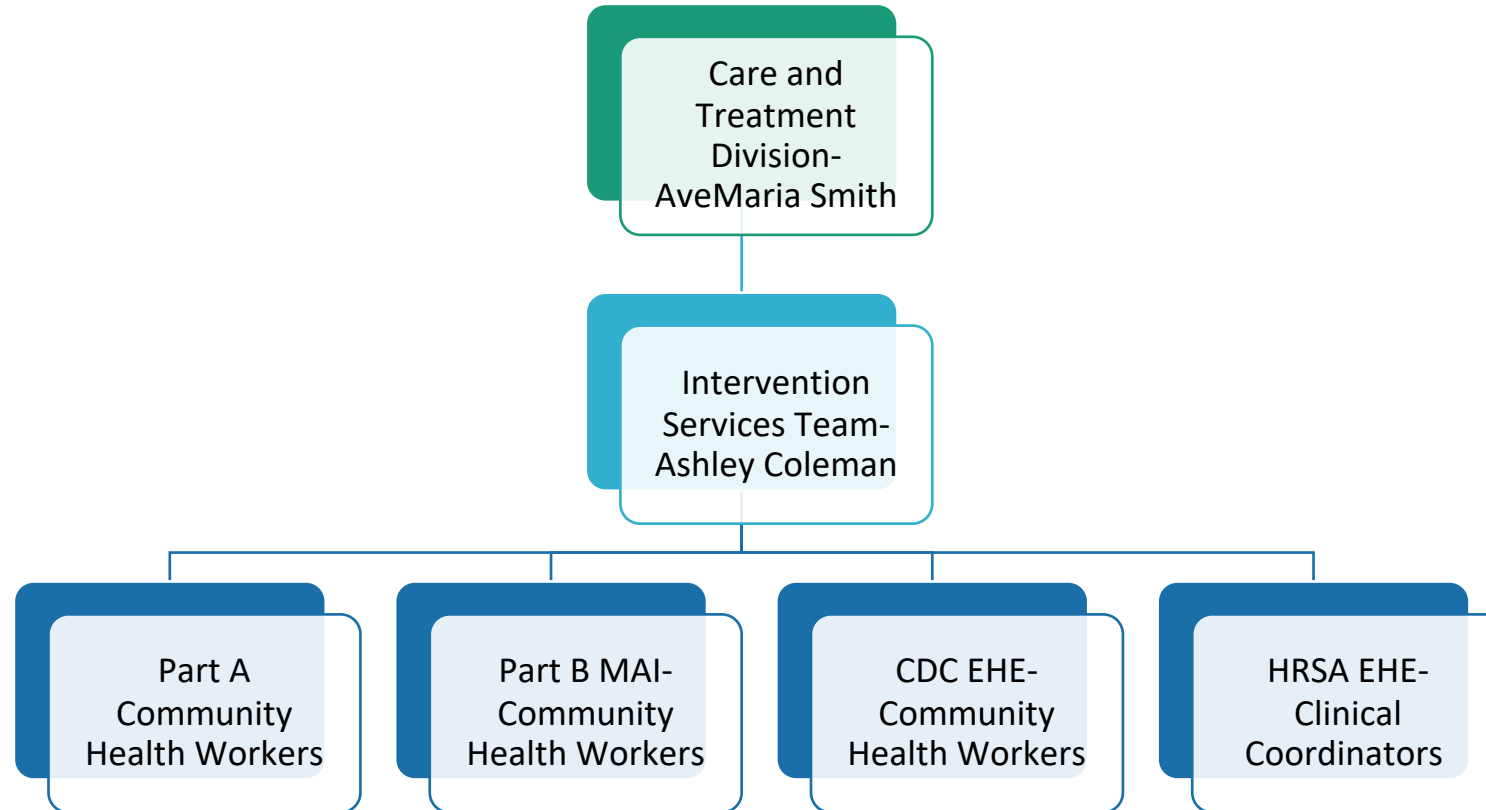
---

## Direct Service:

Improve viral suppression by providing outreach, HE/RR and care coordination services to PLWH in the DC EMA

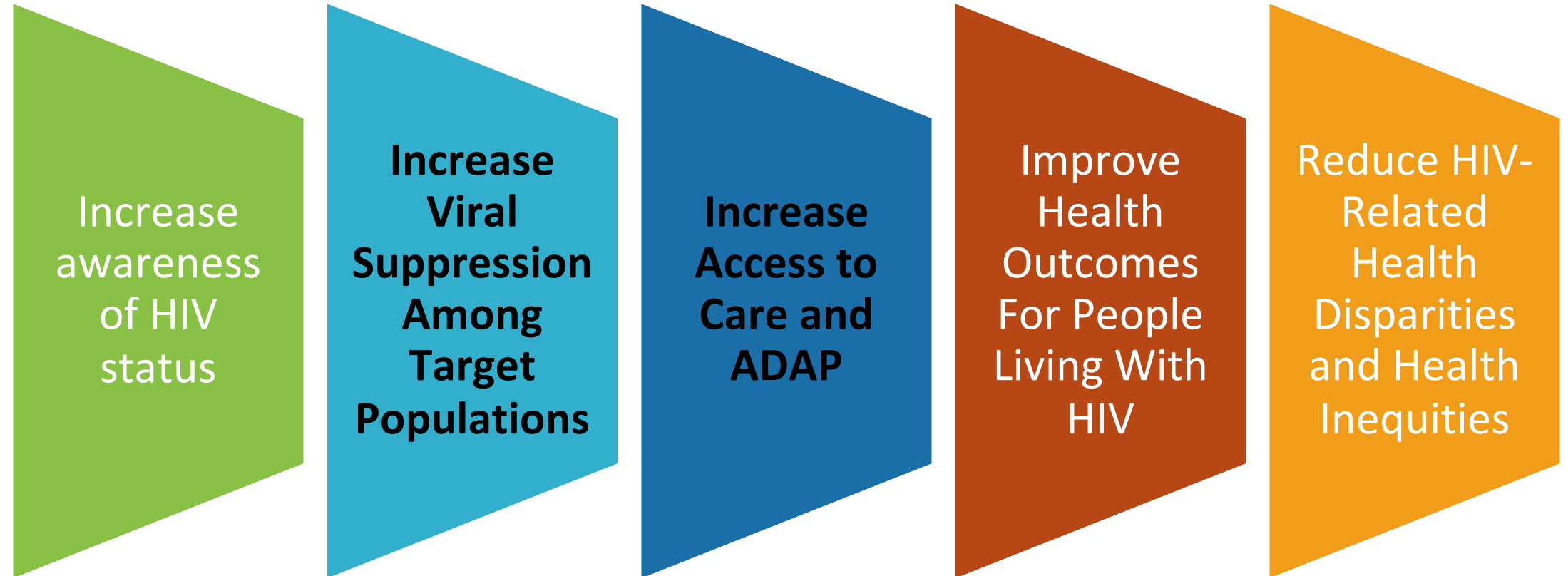
---

# Organization Chart



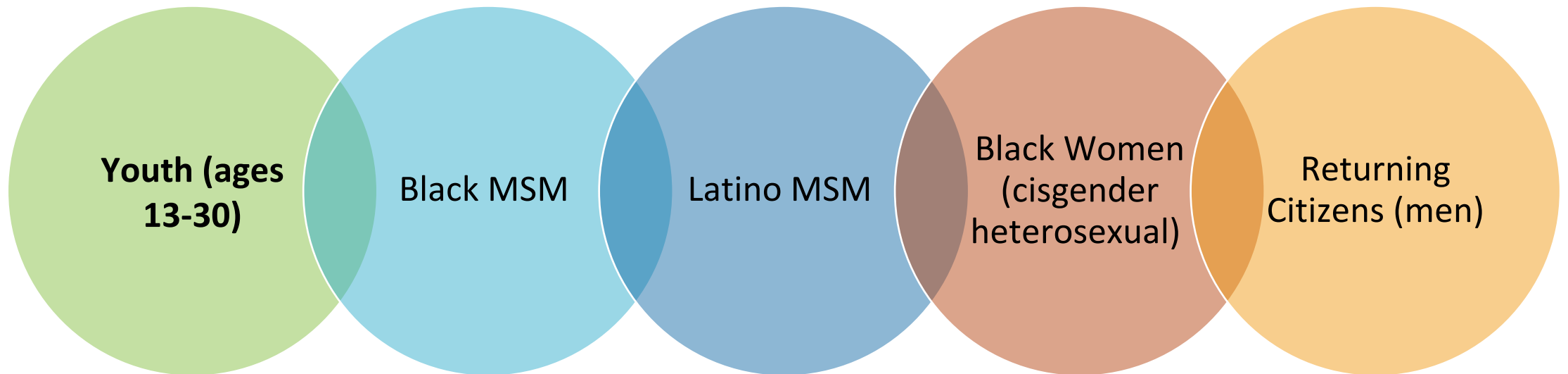
# ISP Goals

*Boxes 2 and 3 are the primary focus of the goals as it works with Part B MAI*

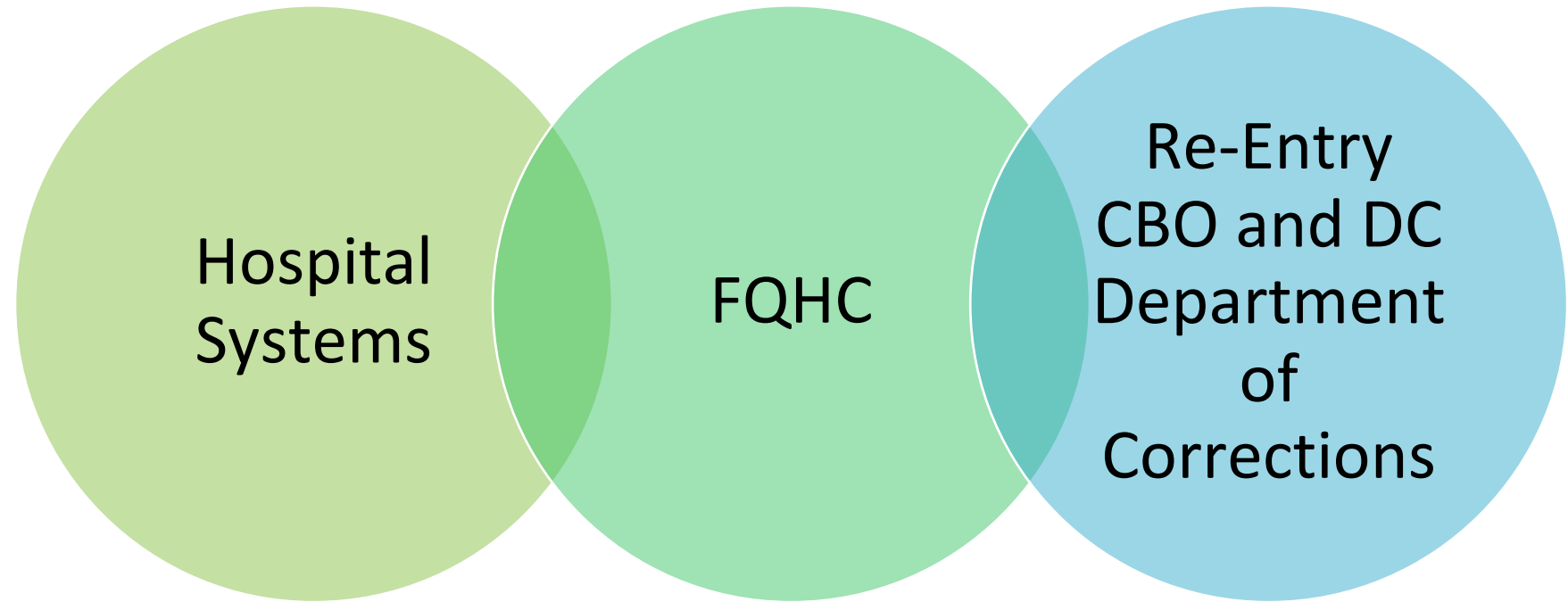


# ISP Target Populations

*Selected based on surveillance reports*



# Community Partnerships




# How Partnerships Were Determined

Who serves the most clients within the target population



Who has the most clients who are not virally suppressed within the target population



Who is willing to be a part of the pilot program

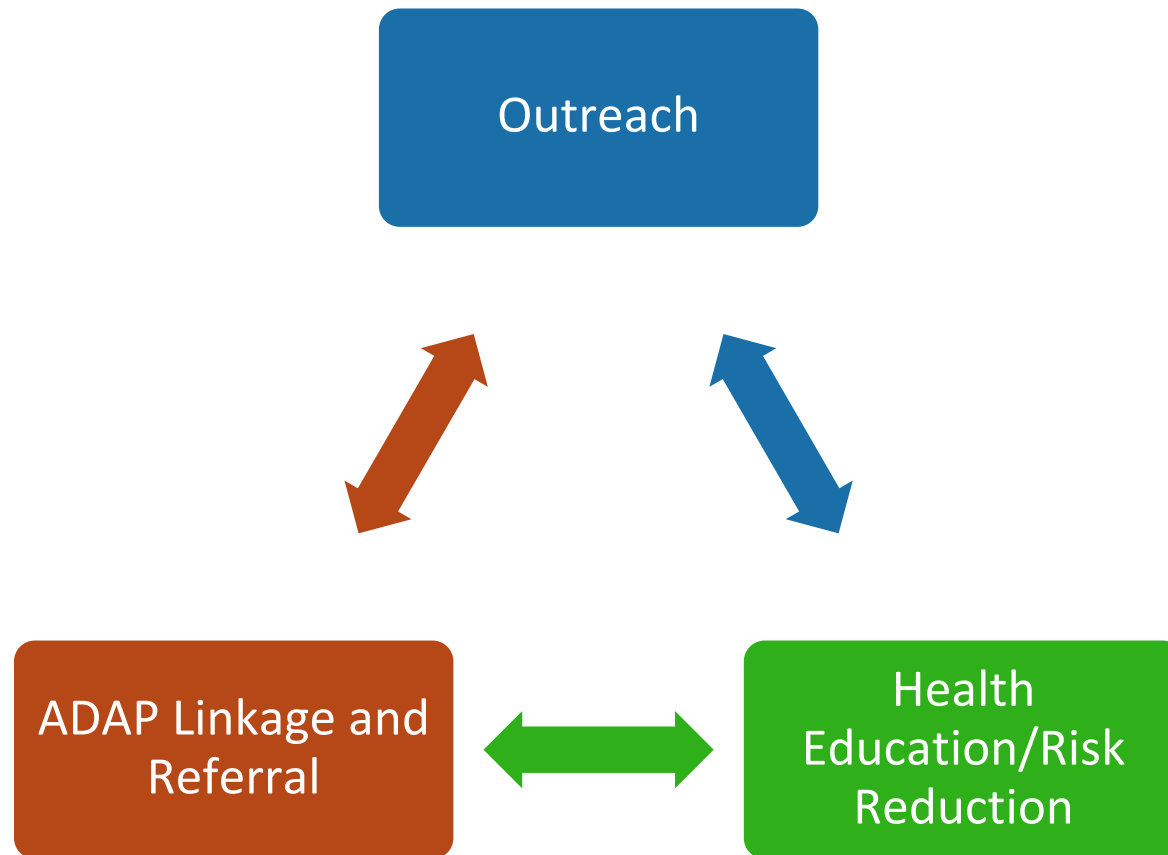


# Part B MAI Intervention Services Program

# Purpose of Part B MAI Interventions Services Program

- Provide intensive community health worker services to those newly diagnosed and/or lost to care
- Provide outreach and health education/risk reduction services to the target population
- Enroll/re-certify customers in ADAP services
- Assist customers with achieving viral suppression
- Support customers as they navigate systems to remove barriers to care

# Part B MAI Services



# PROGRAM ACTIVITIES



Assessments to identify client strengths and unmet needs



Health navigation



Treatment adherence and accompaniment to medical appointments



Development and implementation of outreach efforts to facilitate client compliance/access



Tracking client's medical follow-up care

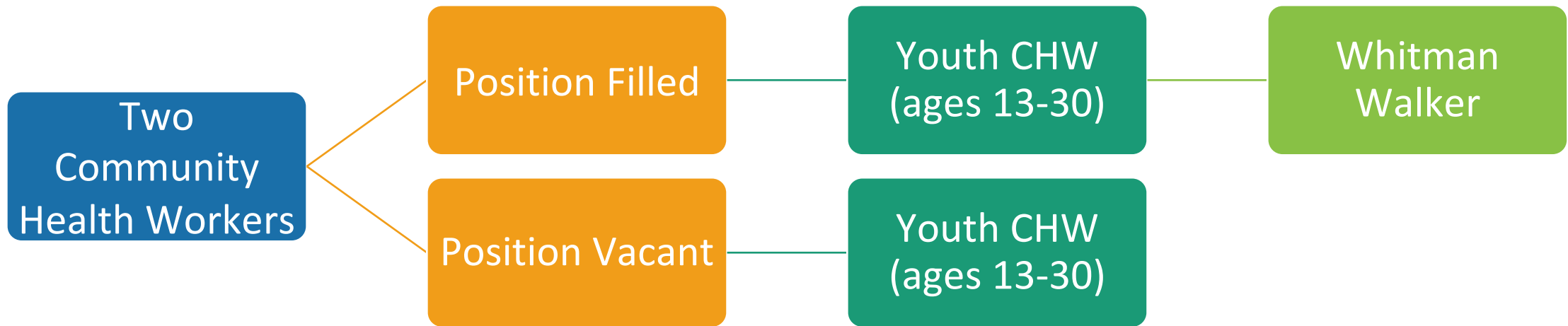


Interacting, planning and coordinating with other members of the multidisciplinary team



Identifying/ utilizing all appropriate available community resources to link clients to services

# Part B MAI Program



# QUESTIONS?

# DC | HEALTH

GOVERNMENT OF THE DISTRICT OF COLUMBIA

899 North Capitol Street NE, 5th Fl, Washington, DC 20002

 [dchealth.dc.gov](https://dchealth.dc.gov)

 @\_DCHealth

 dchealth

 DC Health

For more information on the District's COVID-19 response, visit [coronavirus.dc.gov](https://coronavirus.dc.gov)